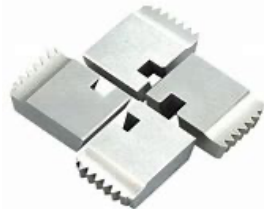


CAPITAL

CUTTING TOOLS



COVENTRY STYLE CHASER DIES - "S" RAKE - METRIC

HIGH SPEED STEEL - GROUND THREAD

Code Prefix:		CV12 -	CV20 -	CV25 -	CV32-	CV38-	CV50-
		Sectional Size	Sectional Size	Sectional Size	Sectional Size	Sectional Size	Sectional Size
		1/2 x 1/4	3/4 x 5/16	7/8 x 3/8	1" x 7/16	1.1/8 x 1/2	1.1/2 x 5/8
		Head	Head	Head	Head	Head	Head
		1/2	3/4	1"	1.1/4	1.1/2	2"
Code	Thread Form	\$ ea.	\$ ea.	\$ ea.	\$ ea.	\$ ea.	\$ ea.
0407	4 x 0.7	153.44					
0508	5 x 0.8	153.44	226.31	255.57			
0610	6 x 1.0	153.44	226.31	255.57			
0812	8 x 1.25	153.44	226.31	255.57			
1015	10 x 1.5	153.44	226.31	255.57	330.12		
1217	12 x 1.75	153.44	226.31	255.57	330.12	388.68	
1420	14 x 2.0	153.44	226.31	255.57	330.12	388.68	
1620	16 x 2.0	153.44	226.31	255.57	330.12	388.68	
1825	18 x 2.5		226.31	255.57	330.12	388.68	
2025	20 x 2.5		226.31	255.57	330.12	388.68	
2225	22 x 2.5			255.57	330.12	388.68	
2430	24 x 3.0			255.56	330.12	388.68	
2730	27 x 3.0				330.12	388.68	
3035	30 x 3.5				330.12	388.68	
3335	33 x 3.5					388.68	699.28
3640	36 x 4.0				330.11	388.68	699.28
3940	39 x 4.0						699.28
4245	42 x 4.5						699.28

CAPITAL

CUTTING TOOLS



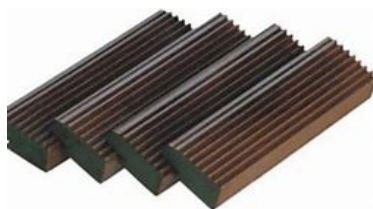
COVENTRY STYLE CHASER DIES - "S" RAKE - UNC & UNF

HIGH SPEED STEEL - GROUND THREAD

Code Prefix:		CV12 -	CV20 -	CV25 -	CV32-	CV38-	CV50-
		Sectional Size	Sectional Size	Sectional Size	Sectional Size	Sectional Size	Sectional Size
		1/2 x 1/4	3/4 x 5/16	7/8 x 3/8	1" x 7/16	1.1/8 x 1/2	1.1/2 x 5/8
		Head	Head	Head	Head	Head	Head
		1/2	3/4	1"	1.1/4	1.1/2	2"
Code	UNC	\$ ea.	\$ ea.	\$ ea.	\$ ea.	\$ ea.	\$ ea.
2820	1/4 x 20	153.44	226.31				
3018	5/16 x 18	153.44	226.31				
3216	3/8 x 16	153.44	226.31	255.57			
3414	7/16 x 14	153.44	226.31	255.57			
3613	1/2 x 13	153.44	226.31	255.57	330.12		
3812	9/16 x 12		226.31	255.57	330.12		
4011	5/8 x 11		226.31	255.57	330.12		
4410	3/4 x 10		226.31	255.57	330.12		
4809	7/8 x 9			255.57	330.12	388.68	
5208	1" x 8			255.57	330.12	388.68	
UNF							
2828	1/4 x 28	153.44	226.31				
3024	5/16 x 24	153.44	226.31				
3224	3/8 x 24	153.44	226.31	255.56			
3420	7/16 x 20	153.44	226.31	255.57			
3620	1/2 x 20	153.44	226.31	255.57	330.12		
3818	9/16 x 18		226.31	255.57	330.12		
4018	5/8 x 18		226.31	255.57	330.12		
4416	3/4 x 16		226.31	255.57	330.12		
4814	7/8 x 14			255.57	330.12	388.68	
5212	1" x 12			255.56	330.12	388.68	
5412	1.1/8 x 12				330.12	388.68	
5612	1.1/4 x 12				330.12	388.68	

CAPITAL

CUTTING TOOLS



TANGENTIAL CHASER DIES

HIGH SPEED STEEL - GROUND THREAD

Code Prefix:		C2 -	C3 -	C93 -	C94-	C10-	C11-
		Sectional Size	Sectional Size	Sectional Size	Sectional Size	Sectional Size	Sectional Size
		1" X 4"	1.1/2 X 5"	1.3/64 X 3"	1.3/64 X 4"	1.109 X 4"	1.1/4 X 4"
Code	Thread Form	\$ ea.	\$ ea.	\$ ea.	\$ ea.	\$ ea.	\$ ea.
10100	1.0mm Pitch	383.57		372.72	386.03	386.03	452.58
10125	1.25mm Pitch	383.57		372.72	386.03	386.03	452.58
10150	1.5mm Pitch	383.57		372.72	386.03	386.03	452.58
10175	1.75mm Pitch	383.57		372.72	386.03	386.03	452.58
10200	2.0mm Pitch	383.57		372.72	386.03	386.03	452.58
10250	2.5mm Pitch	383.57		372.72	386.03	386.03	452.58
10300	3.0mm Pitch	383.57	599.09	372.72	386.03	386.03	452.58
10350	3.5mm Pitch	383.57	599.09	372.72	386.03	386.03	452.58
10400	4.0mm Pitch	383.57	599.09	372.72	386.03	386.03	452.58
10450	4.5mm Pitch		599.09				
10500	5.0mm Pitch		599.09				
10550	5.5mm Pitch		599.09				
10600	6.0mm Pitch		599.09				
2005	5 UN		599.09				
2006	6 UN		599.09				
2007	7 UN		599.09				
2008	8 UN	383.57	599.09				
2009	9 UN	383.57	599.09				
2010	10 UN	383.57	599.09	372.72	386.03	386.03	452.58
2011	11 UN	383.57		372.72	386.03	386.03	452.58
2012	12 UN	383.57		372.72	386.03	386.03	452.58
2013	13 UN	383.57		372.72	386.03	386.03	452.58
2014	14 UN	383.57		372.72	386.03	386.03	452.58
2016	16 UN	383.57		372.72	386.03	386.03	452.58
2018	18 UN	383.57		372.72	386.03	386.03	452.58
2020	20 UN	383.57		372.72	386.03	386.03	452.58